



# Repair Movies, Mechanical

Applicable for W880i

## Contents

<b>1</b>	<b>Read this first!.....</b>	<b>2</b>
<b>2</b>	<b>Movies .....</b>	<b>3</b>
2.1	Disassembly .....	3
2.2	Reassembly .....	3
<b>3</b>	<b>Revision History .....</b>	<b>3</b>



# 1 Read this first!

By clicking on the pictures with blue borders in the Movies section, the repair movies will be shown in an Internet Explorer window.

However, when running the movies on a Windows XP computer with Service Pack 2 installed, the movies become blocked each time you try to access them and will not be launched until you have accepted to unblock the content and then again confirmed the action.

To avoid this, you can adjust your computer's security settings in the following way:

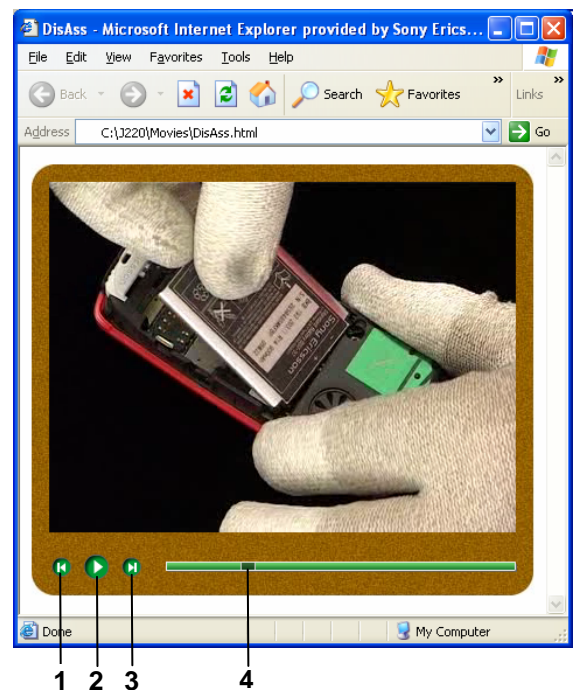
- open Internet Explorer
- click Tools / Internet Options / Advanced, and scroll down until you find Security
- check the box with the text 'Allow active content to run in files on My Computer'

**NOTE! Do NOT CHANGE THIS SETTING UNLESS YOU ARE AWARE OF HOW THIS WILL AFFECT THE SECURITY OF YOUR COMPUTER!**

After having the first movie window opened, you should adjust the size of the Internet Explorer window until it looks like the adjacent picture example.

Furthermore, the movie can be controlled with the help of three buttons and a slider handle, as follows:

- 1 - Go to the beginning of the movie
- 2 - When running - 'Freeze' the picture  
When 'frozen' - Start running from current position
- 3 - Go to the end of the movie
- 4 - Slide the handle to any wanted part of the movie  
or use it as a slow motion 'scrubber'



**NOTE! THESE REPAIR MOVIES ARE TO BE REGARDED AS A SUPPLEMENT TO AND NOT A SUBSTITUTE FOR THE WORKING INSTRUCTIONS.**

**NOTE! WHEN WATCHING THESE MOVIES YOU SHOULD HAVE THE WORKING INSTRUCTIONS AVAILABLE SINCE THE WORKING INSTRUCTIONS CONTAIN A LOT OF INFORMATION NOT INCLUDED IN THE REPAIR MOVIES.**

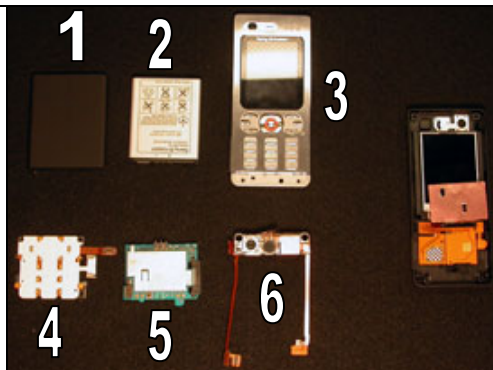
## 2 Movies

There are movies covering all of the disassembly and reassembly procedures documented in the mechanical working instructions for this product. No specific part replacements movies are available for this product due to the ease of following the written part specific procedures.

### 2.1 Disassembly

Consists of:

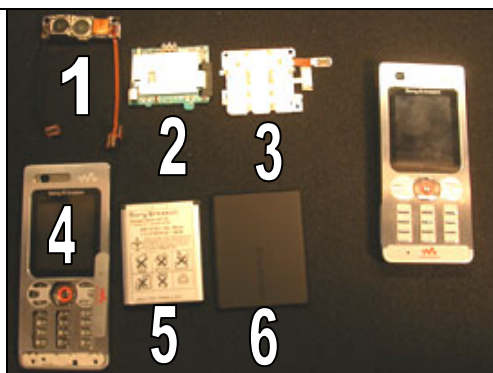
- Battery Cover Removal
- Battery Removal
- Front Cover Removal
- Dome Foil Removal
- Circuit Board Removal
- Camera Assembly Removal



### 2.2 Reassembly

Consists of:

- Camera Assembly Installation
- Circuit Board Installation
- Dome Foil Installation
- Front Cover Installation
- Battery Installation
- Battery Cover Installation



## 3 Revision History

Rev.	Date	Changes / Comments
A	2007-02-19	Initial Release